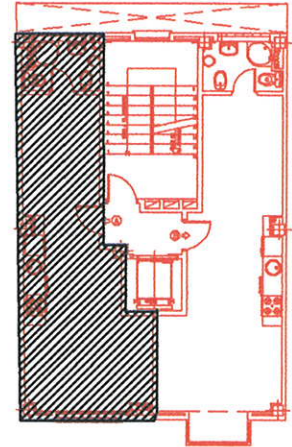
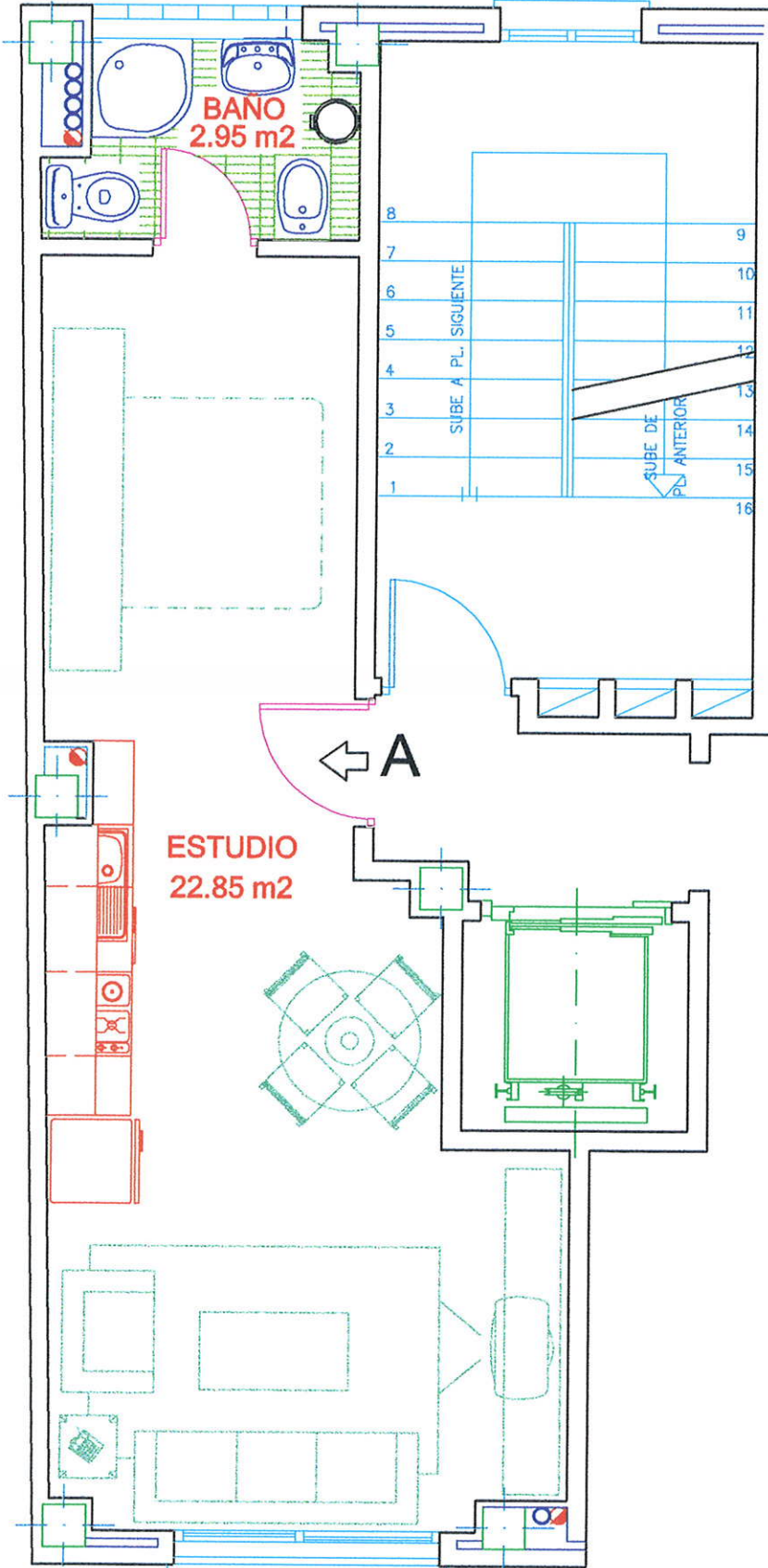
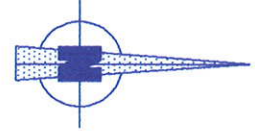


# RESIDENCIAL "LA ESTRELLA DE CARAMUEL"

13 VIVIENDAS



PLANTA TIPO (1ª A 5ª)

VIVIENDA "A". PLANTA PRIMERA

C/. CARAMUEL S/N. MADRID

Superficie Construida 42.70 m<sup>2</sup>.

Superficie Util 27.80 m<sup>2</sup>.

0 1 2 3 m.

ESCALA GRAFICA

DOCUMENTO INFORMATIVO