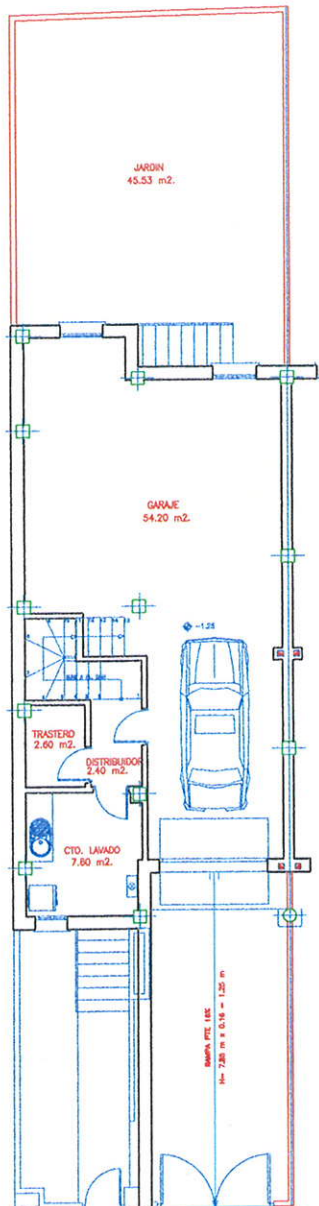
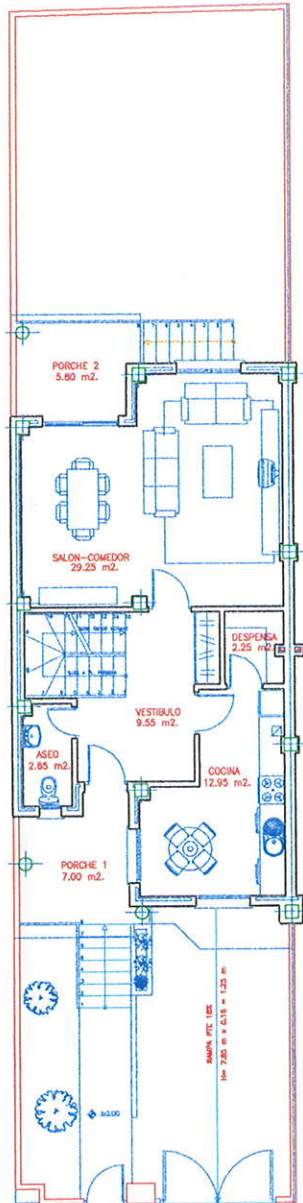


# PLAN PARCIAL PP1.4 PARCELAS 5.2.11 y 5.2.12 FUENLABRADA (MADRID)

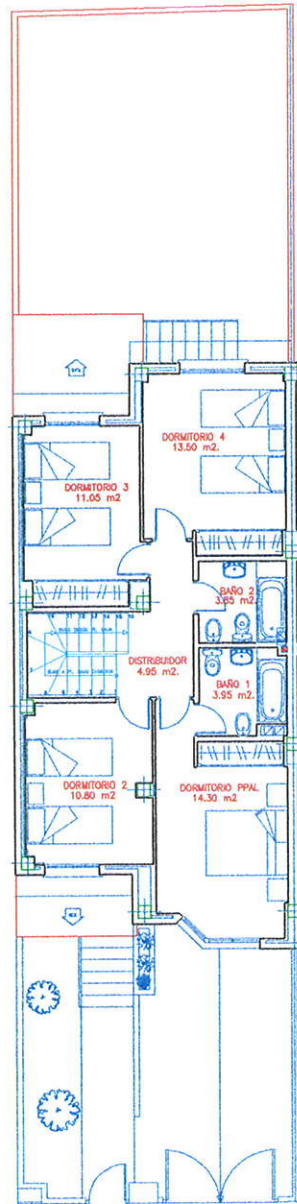
## 2 VIVIENDAS UNIFAMILIARES ADOSADAS



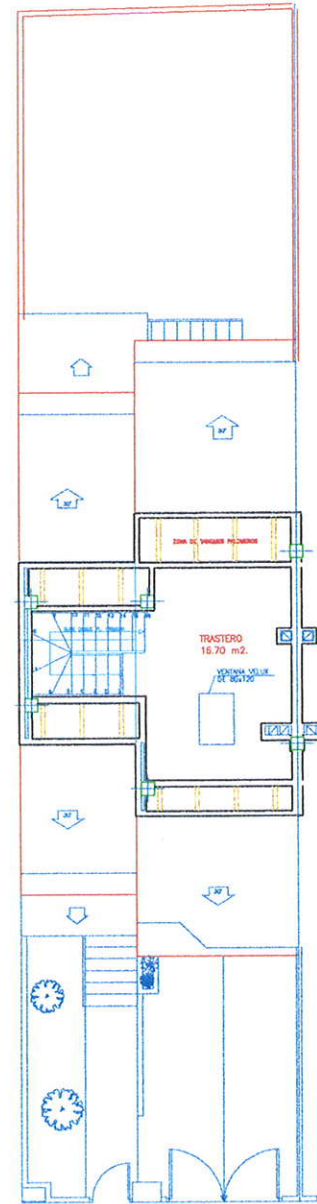
PLANTA SEMISOTANO



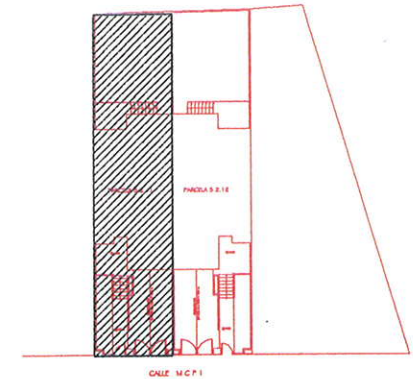
PLANTA BAJA



PLANTA PRIMERA



PLANTA BAJO CUBIERTA



PARCELA 5.2.11

SUPERFICIE PARCELA: 178.66 m<sup>2</sup>.

SUPERFICIE CONSTRUIDA: 259.98 m<sup>2</sup>.

SUPERFICIE UTIL: 208.95 m<sup>2</sup>.