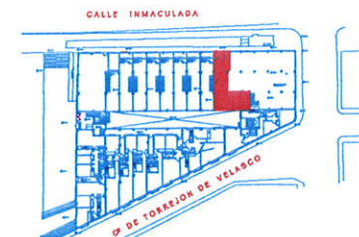
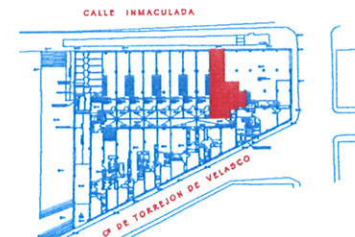
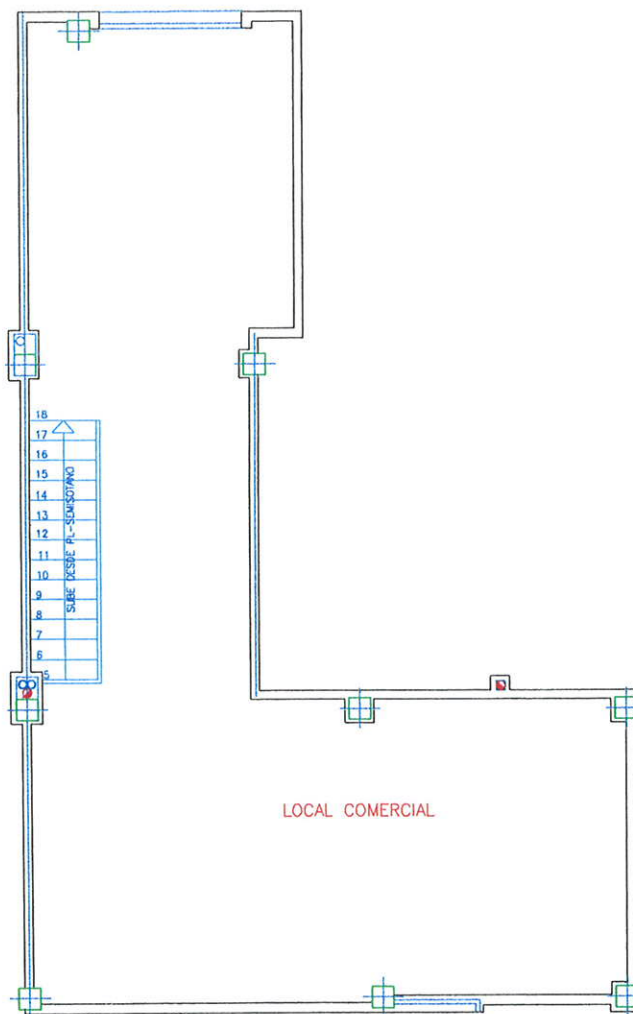
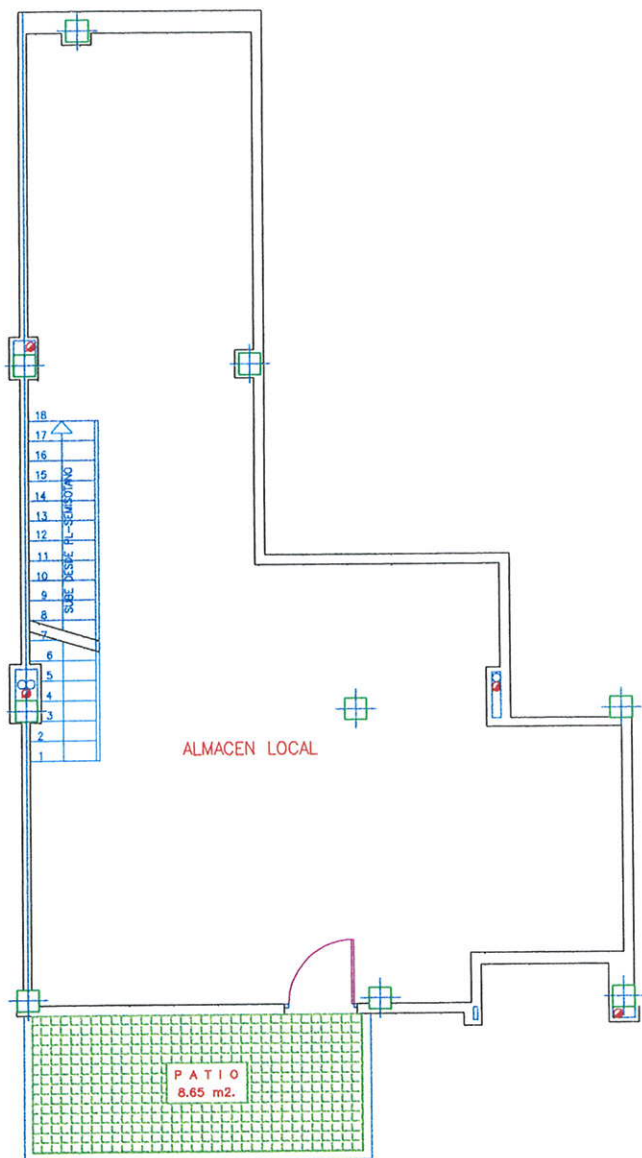


RESIDENCIAL "LA ESTRELLA DE CASARRUBUELOS"

43 VIVIENDAS, LOCALES, TRASTEROS Y GARAJE



PROMUEVE: DURALVI 2010, S.A.
 PLANTA BAJA / SEMISOTANO.
 LOCAL COMERCIAL
 CALLE INMACULADA N° 13-A
 CASARRUBUELOS (MADRID)

SUPERFICIE CONSTRUIDA

| | |
|----------|-----------|
| ALMACEN: | 72.08 m2 |
| LOCAL: | 74.19 m2 |
| TOTAL: | 146.27 m2 |

SUPERFICIE UTIL

| | |
|----------|-----------|
| ALMACEN: | 62.90 m2 |
| LOCAL: | 60.90 m2 |
| TOTAL: | 123.80 m2 |

